

# RCS2-GR8

ROBO Cylinder 2-Finger Gripper Long Stroke Slider Type 104 ~ 284mm Width  
200V Servo Motor

■ Configuration: **RCS2** — **GR8** — **I** — **60** — **5** —  —  —

Series — Type — Encoder — Motor — Deceleration Ratio — Stroke — Compatible Controllers — Cable Length

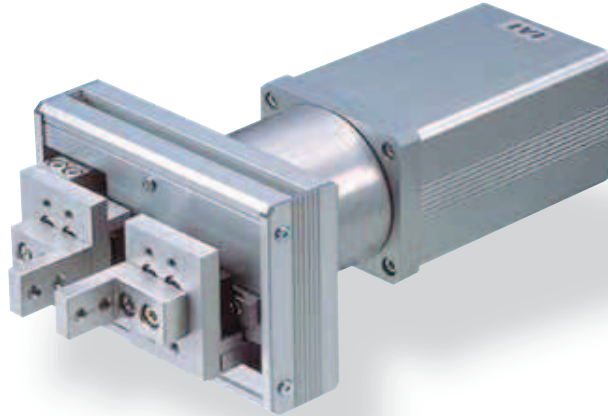
I : Incremental 60: 60W Servo motor 5 : 1/5

Stroke  
20: 20mm  
40: 40mm  
(60): 60mm  
(80): 80mm  
100: 100mm  
(120): 120mm  
(200): 200mm

Compatible Controllers  
T1 : XSEL-J/K  
T2 : SCON  
SSEL  
XSEL-P/Q

Cable Length  
N : None  
P : 1m  
S : 3m  
M : 5m  
X  : Custom Length  
R  : Robot Cable

\* See page Pre-35 for explanation of each code that makes up the configuration name.



\* Please note that, when gripping (pressing), the speed is fixed at 10mm/s.

Technical References P. A-5

**POINT**  
Notes on Selection

(1) Stroke values enclosed in "( )" are (60, 80, 120, 200) are semi-standard models.  
(2) The maximum gripping force is the sum of both fingers.

## Actuator Specifications

### Lead and Load Capacity

Model	Motor Output (W)	Deceleration Ratio	Max. Gripping Force (N)	Stroke (mm)
RCS2-GR8-I-60-5-①-②-③	60	1/5	45.1	20, 40, (60), (80), 100, (120), (200)

Legend: ① Stroke ② Compatible controller ③ Cable length

### ① Stroke List

Stroke (mm)	Standard Price
20	-
40	-
(60)	-
(80)	-
100	-
(120)	-
(200)	-

### ③ Cable List

Type	② Cable Symbol	Standard Price
Standard Type	P (1m)	-
	S (3m)	-
	M (5m)	-
Special Lengths	X06 (6m) ~ X10 (10m)	-
	X11 (11m) ~ X15 (15m)	-
	X16 (16m) ~ X20 (20m)	-
	R01 (1m) ~ R03 (3m)	-
Robot Cable	R04 (4m) ~ R05 (5m)	-
	R06 (6m) ~ R10 (10m)	-
	R11 (11m) ~ R15 (15m)	-
	R16 (16m) ~ R20 (20m)	-
	R11 (11m) ~ R15 (15m)	-

\* See page A-39 for cables for maintenance.

## Actuator Specifications

Item	Description
Drive System	Rack and pinion
Positioning Repeatability	±0.04mm
Lost Motion	0.7mm or less
Base	Material: Aluminum (white alumite treated)
Allowable Static Load Moment	Ma: 5.1 N·m Mb: 5.1 N·m Mc: 10.4 N·m
Ambient Operating Temp./Humidity	0 ~ 40°C, 85% RH or less (non-condensing)

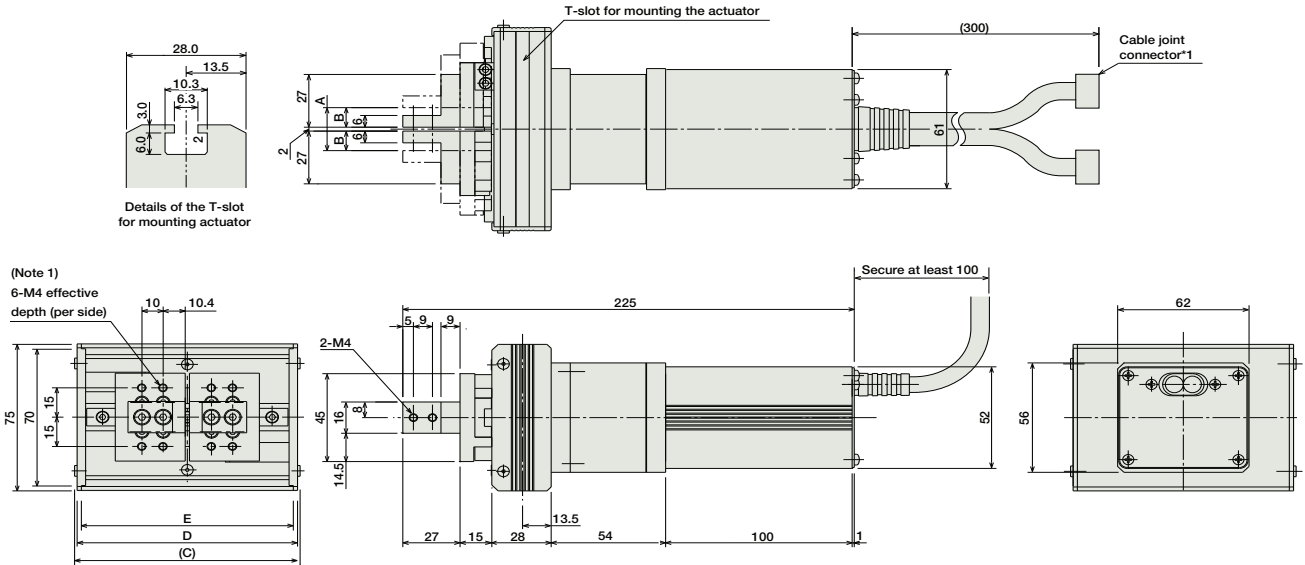
Dimensions

CAD drawings can be downloaded from IAI website. [www.intelligentactuator.com](http://www.intelligentactuator.com)

For Special Orders P. A-9



\* The opening side of the slider is the home position.



\*1 The motor cable and encoder cable are connected here. See page A-39 for details on cables. (Note 1) The number of tapped holes on the finger mounting plate is for one side. In addition, by default, each finger is secured using 2 tapped holes.

■ Dimensions and Weight by Stroke

Stroke	20	40	(60)	(80)	100	(120)	(200)
A	22	42	62	82	102	122	202
B	10	20	30	40	50	60	100
C	106.4	126.4	146.4	166.4	186.4	206.4	286.4
D	104	124	144	164	184	204	284
E	100	120	140	160	180	200	280
Weight (kg)	1.8	1.9	1.9	2.0	2.0	2.1	2.3

\*1 The strokes enclosed in ( ) are semi-standard configurations, and will require longer delivery time.

② Compatible controller

The RCS2 series actuators can operate with the controllers below. Select the controller according to your usage.

Name	External View	Model	Description	Max. Positioning Points	Input Voltage	Power Supply Capacity	Standard Price	See Page
Positioner Mode		SCON-C-60-NP-2-①	Positioning is possible for up to 512 points	512 points	Single-phase AC100V Single-phase AC200V Three-phase AC200V (XSEL-P/Q only)	360VA max.  * When operating a 150W single-axis model	-	→ P547
Solenoid Valve Mode			Operable with the same controls as the solenoid valve	7 points				
Serial Communication Type			Dedicated to serial communication	64 points				
Pulse Train Input Control Type			Dedicated to pulse train input	(-)				
Program Control 1 - 2 Axes Type		SSEL-C-1-60-NP-2-①	Programmed operation is possible Operation is possible on up to 2 axes	1500 points			-	→ P577
Program Control 1-6 Axis Type		XSEL-②-1-60-N1-EEE-2-③	Programmed operation is possible Operation is possible on up to 6 axes	20000 points			-	→ P587

\* For SSEL and XSEL, only applicable to the single-axis model.  
 \* ① is a placeholder for the power supply voltage (1: 100V, or 2: single-phase 200V).  
 \* ② is a placeholder for the type name of XSEL ("J", "K", "P", "Q").  
 \* ③ is a placeholder for the type of power supply voltage (1: 100V, 2: single-phase 200V, or 3: 3-phase 200V).

- Slider Type
- Mini
- Standard
- Controllers Integrated
- Rod Type
- Mini
- Standard
- Controllers Integrated
- Table/Arm/Flat Type
- Mini
- Standard
- Gripper/Rotary Type
- Linear Servo Type
- Cleanroom Type
- Splash-Proof
- Controllers
- PMEC/AMEC
- PSEP/ASEP
- ROBO NET
- ERC2
- PCON
- ACON
- SCON
- PSEL
- ASEL
- SSEL
- XSEL
- Pulse Motor
- Servo Motor (24V)
- Servo Motor (200V)
- Linear Servo Motor