

Ball Joints

BÖNNEKAMP

Bönnekamp is a very well-known brand with a strong market share owned by ATB Automation.

More than 30 years of high quality mechanical components have been applied in various (OEM) industries. The main focus is on Clevises, Rod Ends and Ball Joints.

Our standard products, but also custom made products, are produced on machines which fulfill the highest quality requirements.

Non standard products can be designed or copied by samples / drawings.

The Bönnekamp mechanical components are quality tested with modern professional testing machines.

The whole production process is under control of ISO9001:2008 and ISO/TS16949.

Excellent Products, remarkable Performance and... interesting Price!

Real value for money! This is where the Bönnekamp brand stands and cares for.

Based on the service principle of direct availability, faithfulness and custom-orientation our quality products are being sold all over Europe.

Contact your distributor or visit our www.bonnekamp.eu.com website for more information.

Your inquiry will be processed with the utmost care to offer a perfect solution.

No rights can be derived from this publication.

Ball joints

Angle Joints

DIN71802

04

Ball Sockets

DIN71805

05

Ball Studs

DIN71803

06

Axial Joints

DIN71802

07

Ball Joints SQ

08

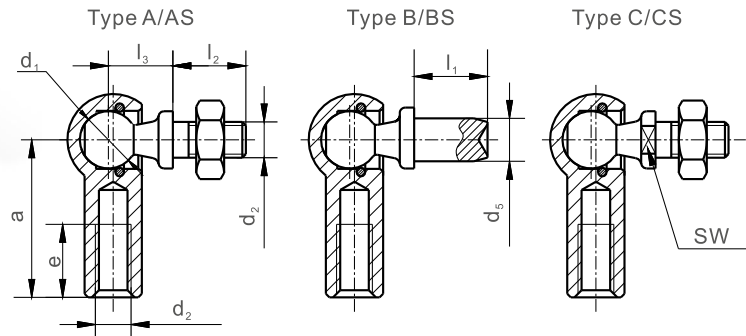
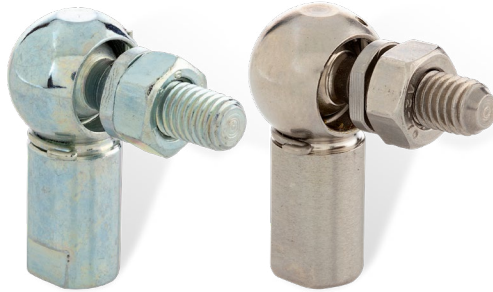
AVAILABLE ▶

ZINC PLATED

SS 304

SS 316





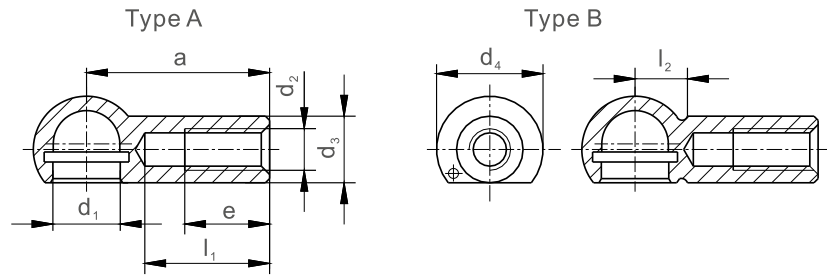
Dimensions (mm)									Weight (kg) kg/1000 pieces for type	
d_1	d_2	l_2	l_3	e	d_5	l_1	a	SW	A and AS C and CS	B and BS
h9		± 0.3	± 0.3	min.	h11	± 0.2	± 0.3	h14		
8	M 5 × 0.8	10.2	9	10.2	5	4.0 7.5	22	7	15.20	12.85 13.35
10	M 6 × 1	12.5	11	11.5	6	4.5 8.0	25	8	25.20	21.30 22.00
13	M 8 × 1.25	16.5	13	14.0	8	5.0 10	30	11	53.10	43.10 45.00
16	M 10 × 1.5 M 12 × 1.75	20.0	16	15.5	10	6.0 13	35	13	103.8	82.30 86.60
19	M 14 × 1.5 M 14 × 2 M 16 × 1.5 M 16 × 2	28.0	20	21.5	14	12 18	45	16	220.9	181.0 188.7

- 1) Type A, B, C without safety clip on the ball socket Type AS, BS, CS with safety clip on the ball socket.
- 2) Ball stud of type C, CS with spanner surface.
- 3) Alternative left-hand thread for the ball socket.
- 4) Ball socket with or without spanner surface or hexagon surface as required.
- 5) Ball stud with or without sealing cap (DK) as required.
- 6) Ball stud with or without nut as required.

Material and surface treatments:

- 1) Ball stud: medium carbon steel. Ball socket: low carbon steel. Snap ring and safety clip: spring steel. Zinc plating.
 - 2) Alternative stainless steel 304 or stainless steel 316.
- Specials on request (only volumes).





Dimensions (mm)							Weight (kg) kg/1000 pieces for type		
d_1	d_2	a ± 0.3	d_3 ± 0.5	d_4 ± 0.5	e min.	l_1 max.	l_2 ± 0.4	A	B
8	M 5 × 0.8	22	8	12.8	10.2	15	6.3	9.0	8.8
10	M 6 × 1	25	10	14.8	11.5	17	7.0	14.2	14.1
13	M 8 × 1.25	30	13	19.3	14.0	20	9.1	29.0	28.8
16	M 10 × 1.5 M 12 × 1.75	35	16	24.0	15.5	22	11.4	57.0	56.8
19	M 14 × 1.5 M 14 × 2 M 16 × 2	45	22	30.0	21.5	28	12.5	125.0	124.8

- 1) Type B with safety clip.
- 2) Alternative with left-hand thread.
- 3) Alternative with spanner surface or hexagon surface.

Material and surface treatments:

- 1) Low carbon steel. Zinc plating.
 - 2) Alternative stainless steel 304 or stainless steel 316.
- Specials on request (only volumes).

Ball Studs



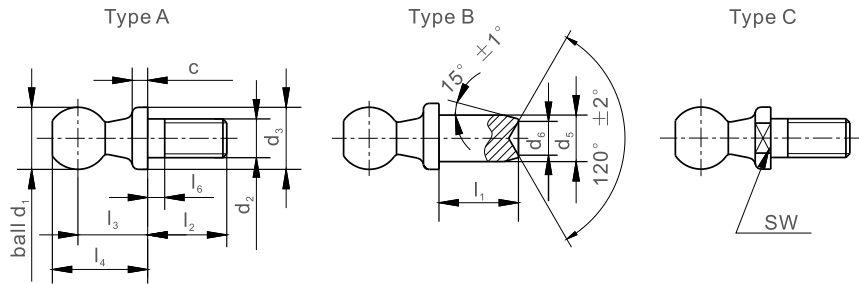
DIN71803

AVAILABLE ▶

ZINC PLATED

SS 304

SS 316

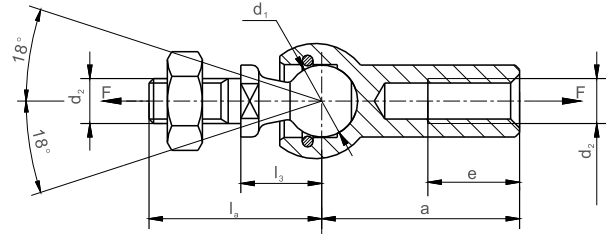


Dimensions (mm)												Weight (kg) kg/1000 pieces for type	
d_1	d_2	l_1	c	d_3	d_5	d_6	l_2	l_3	l_4	l_6	SW	A and C	B
h_9		± 0.2	± 0.4	h_{14}	h_{11}	-0.4	± 0.3	± 0.3	± 0.3	max.	h_{14}		
8	M 5 × 0.8	4.0 7.5	2.0	8	5	3	10.2	9	12.5	4.0	7	4.55	3.85 4.35
10	M 6 × 1	4.5 8.0	2.2	10	6	4	12.5	11	15.5	4.0	8	8.50	7.10 7.80
13	M 8 × 1.25	5.0 10	2.4	13	8	6	16.5	13	18.5	5.3	11	17.7	14.2 16.0
16	M 10 × 1.5 M 12 × 1.75	6.0 13	2.7	16	10	8	20.0	16	23.0	7.3	13	35.1	23.5 29.6
19	M 14 × 1.5 M 14 × 2 M 16 × 2	12 18	3.0	19	14	10	28.0	20	28.5	10.8	16	71.2	56.2 63.7

- 1) Type A without spanner surface, with thread. Type B without spanner surface, without thread. Type C with spanner surface, with thread.
 2) The hardness of ball d_1 : Min. HRC52; Hardening depth: Min. 1mm.

Material and surface treatments:

- 1) Medium carbon steel. Zinc plating.
 2) Alternative stainless steel 304 or stainless steel 316.
 Specials on request (only volumes).



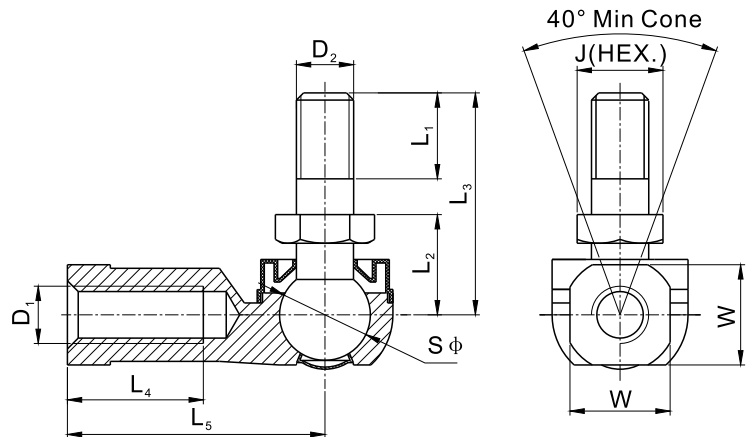
Part No.	Dimensions (mm)						Extraction force F in N*	Weight (kg)
	d ₁	d ₂	a	l _a	l ₃	e		
	h9							Kg per piece
A-C8	8	M 5 × 0.8	22	19.2	9	10.2	30	0.0152
A-C10	10	M 6 × 1	25	23.5	11	11.5	40	0.0252
A-C13	13	M 8 × 1.25	30	29.5	13	14.0	60	0.0531
A-C16	16	M 10 × 1.5 M 12 × 1.75	35	36.0	16	15.5	80	0.1038
A-C19	19	M 14 × 1.5 M 14 × 2 M 16 × 2	45	48.0	20	21.5	100	0.2209

* Also available with higher extraction force, (factor 10). Not possible to dismantle.

- 1) Alternative left-hand thread for the ball socket.
- 2) Ball socket with or without spanner surface or hexagon surface as required.
- 3) With or without sealing cap (DK) as required.

Material and surface treatments:

- 1) Ball stud: medium carbon steel. Ball socket: low carbon steel. Snap ring and safety clip: spring steel. Zinc plating.
 - 2) Alternative stainless steel 304 or stainless steel 316.
- Specials on request (only volumes).



Part No.	Dimensions (mm)										Load ratings (kN)	Weight (kg)
	D ₁	D ₂	L ₁	L ₂	L ₃	L ₄	L ₅	J	W	S Φ		
	6H	6g	Min	±0.5	±0.5	Min	±0.5	-0.3	-0.3	±1.0		Kg=
SQ 5	M5 × 0.8	M5 × 0.8	8.0	10.0	20.0	14.0	27.0	8.0	10.0	10.000	2.0	0.017
SQ 5L	M5 × 0.8-L	M5 × 0.8	8.0	10.0	20.0	14.0	27.0	8.0	10.0	10.000	2.0	0.017
SQ 6	M6 × 1	M6 × 1	11.0	11.0	26.0	16.0	30.0	10.0	11.0	11.112	3.9	0.027
SQ 6L	M6 × 1-L	M6 × 1	11.0	11.0	26.0	16.0	30.0	10.0	11.0	11.112	3.9	0.027
SQ 8	M8 × 1.25	M8 × 1.25	12.0	14.0	31.0	19.0	36.0	12.0	14.0	12.700	6.0	0.057
SQ 8L	M8 × 1.25-L	M8 × 1.25	12.0	14.0	31.0	19.0	36.0	12.0	14.0	12.700	6.0	0.057
SQ 10	M10 × 1.5	M10 × 1.5	21.0	17.0	43.0	23.0	43.0	14.0	17.0	15.875	11.0	0.095
SQ 10L	M10 × 1.5-L	M10 × 1.5	21.0	17.0	43.0	23.0	43.0	14.0	17.0	15.875	11.0	0.095
SQ 12	M12 × 1.75	M12 × 1.75	24.0	19.0	49.0	26.0	50.0	17.0	19.0	19.050	16.0	0.165
SQ 12L	M12 × 1.75-L	M12 × 1.75	24.0	19.0	49.0	26.0	50.0	17.0	19.0	19.050	16.0	0.165
SQ 14	M14 × 2	M14 × 2	28.0	21.5	62.0	30.0	57.0	19.0	22.0	22.225	19.0	0.300
SQ 14L	M14 × 2-L	M14 × 2	28.0	21.5	62.0	30.0	57.0	19.0	22.0	22.225	19.0	0.300
SQ 16	M16 × 2	M16 × 2	29.0	23.5	66.0	34.0	64.0	22.0	24.0	22.225	26.0	0.325
SQ 16L	M16 × 2-L	M16 × 2	29.0	23.5	66.0	34.0	64.0	22.0	24.0	22.225	26.0	0.325

- 1) Move smoothly without stagnation.
- 2) Adequate lubricant should be filled into ball socket.
- 3) Accord with QC / T327 -1999 and relevant standards.

Material and surface treatments:

- 1) Ball socket: high intensive zinc alloy. Natural color.
 - 2) Ball stud: 40Cr alloy steel. Zinc plating.
 - 3) Sealing cap: Neoprene rubber.
- Specials on request (only volumes).



Authorized distributor

2020-02 Product-, image- and data changes reserved.



www.bonnekamp.eu.com